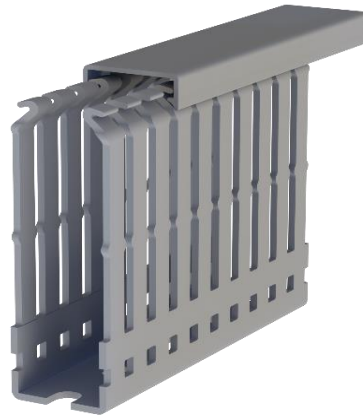


Klemsan®





KKD 2580



| Order | | |
|-----------------------|-----------------|----------|
| RAL 7030 - Stone Grey | Thin Slot (4-6) | 555 2580 |
| | | |

| Dimensions | |
|------------------|-------------|
| Length | 2.000,00 mm |
| Width | 25,00 mm |
| Height w/o cover | 76,80 mm |
| Height w/ cover | 80,00 mm |

| Technical Data | | | |
|--------------------|----------|--------------------|-----------------|
| Material | PVC | Package Qty. | 28 pcs. x 2 mt. |
| Inflammability | UL 94 V0 | Wire Fill Capacity | 60% |
| Max. Service Temp. | 60°C | Min. Service Temp. | -15°C |

| Certifications | |
|--------------------|-------------------------|
| Certificate | Standard |
| CE | EN 50085-2-3 |
| TSE | TS EN 50085-2-3 |
| EAC | GOST R 53313:2009 |
| cULus | UL 1565-C22.2No.18.5-02 |

| Accessories | | | | |
|-----------------------|----------|----------|----------|-----------------|
| Description | Type | Colour | Cat. No. | Qty. |
| Duct Cutter (Scissor) | KKMR | | 553230 | 1 |
| Duct Cutter | KMK 1002 | | 553220 | 1 |
| Cable Duct Cover | KDK 25 | RAL 7030 | 551050 | 10 pcs. x 2 mt. |
| Rivet Setting Tool | SETR | Black | 553500 | 1 |
| Plastic Rivet 6,5 mm | PPE 6,5 | Grey | 553600 | 100 |
| Cable Holder | KKM | Black | 553415 | 10 |